



## WE ARE LOOKING FOR A **VIDEO EDITOR**



### KEY ROLE

The Video Editor creates visual concepts, by hand or using computer software, to communicate ideas that inspire, inform, or captivate consumers. This role also involves creation of videos both animation and filmed footage for multiple online marketing channels and various purposes.



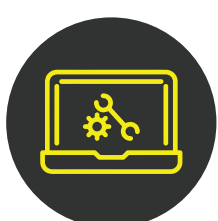
### RESPONSIBILITIES

- Responsible for capturing, editing, and producing studio quality photos and videos for internal and external purposes.
- Collaborate with team members and other departments involved in creating storyboards from pre-production to post production process.
- Trim footage segments and put together the sequence of the film to ensure logical sequencing and smooth running of video materials.
- Input music effects, dialogues, graphics to videos when needed to produce compelling and engaging visual content
- Create and follow company brand guidelines, design concepts and marketing strategy.
- Develop and conceptualize video brand messaging strategies.
- Manage media assets and archive all company media projects.
- Discover and implement new editing technologies and industry's practice to maximize efficiency of produced materials



### QUALIFICATIONS

- Proven graphic designing, filming and video editing experience.
- Possession of creative flair, versatility, conceptual, visual ability and originality.
- Demonstrable graphic design skills with a strong portfolio.
- Ability to interact, communicate and present ideas.
- Strong understanding of post production workflow
- Up to date with industry leading software and technologies (In Design, Illustrator, Dreamweaver, Photoshop, Adobe Creative Cloud suite programs – Premiere, After Effects, Audition, Illustrator etc).
- Highly proficient in all design aspects.



### SYSTEM REQUIREMENTS

- Computer Processor: at least i3 (for both primary and back-up computers)
- Computer Memory/RAM: at least 8.00 GB (for both primary and back-up computers)
- Computer Operating System: at least Windows 7 64-bit

#### Internet Speed

- Primary Connection: running on a 10 Mbps wired plan (above 10mbps preferred)
- Back-up Connection: running at least 10 Mbps

[Apply Now](#)